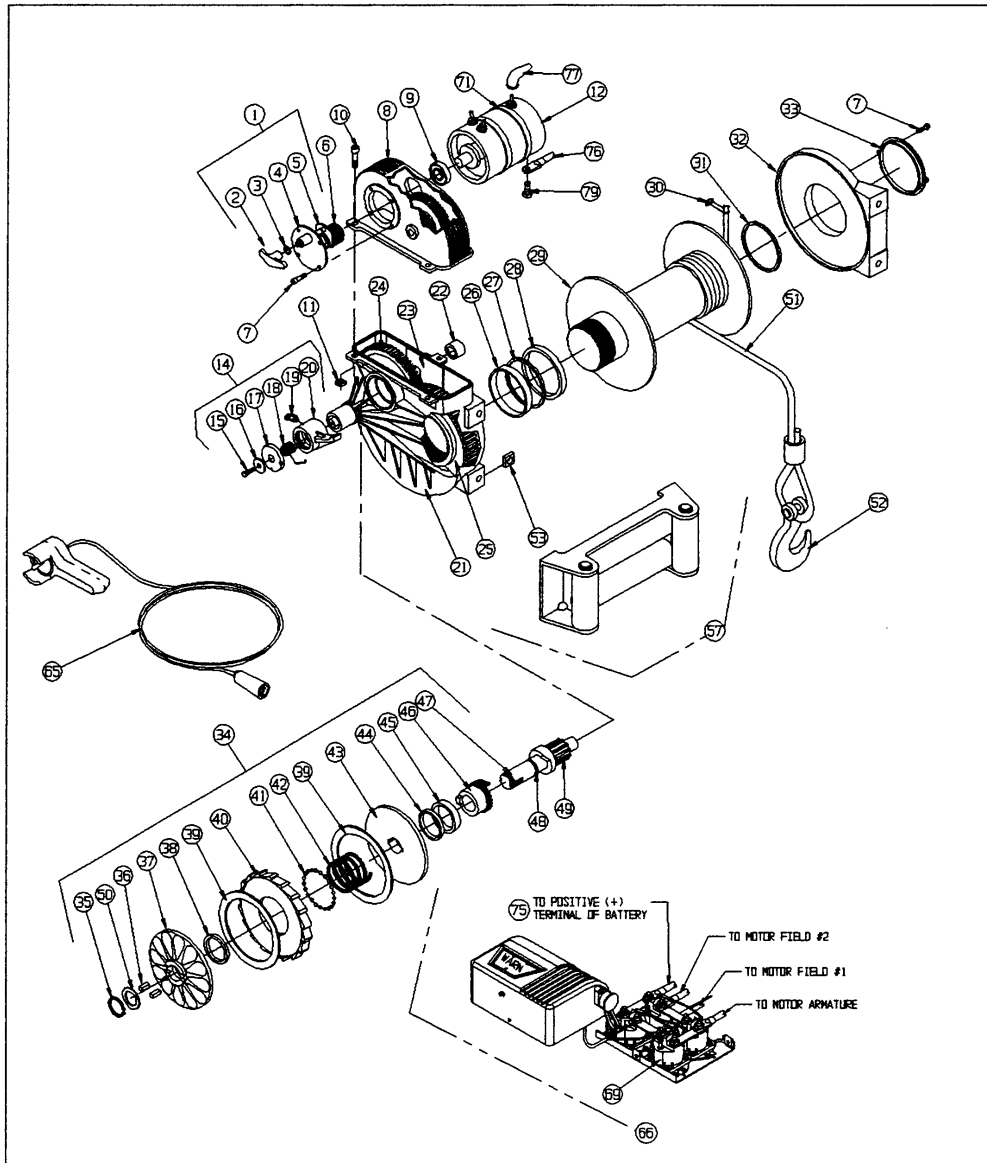


M8274 - 50

SERIAL NO. 344816 AND UP



WARN M8274 WINCH REPLACEMENT PARTS LIST				WARN M8274 WINCH REPLACEMENT PARTS LIST			
SERIAL NO. 344816 AND UP				ORDERING INFORMATION:			
P/N 38631 & 37583				When ordering please give Warn Model , Serial number & Battery voltage. Parts may be obtained through your local dealer or distributor.			
ORDERING INFORMATION:				ITEM	QTY	PART NO.	DESCRIPTION
When ordering please give Warn Model number, Serial number & Battery voltage. Parts may be obtained through your local dealer or distributor.				(Includes items 35, 36, 38, 39, 41, 42, 44, 45, 48 and 50)			
ITEM	QTY	PART NO.	DESCRIPTION	37	1	8703	OUTER BRAKE DISC
1	1	8326	CLUTCH ASSEMBLY (Includes items 2-5)	38	1		HUB (IN 8409 KIT)
2	1	37474	SHIFT KNOB	39	2	9734	FRICTION MATERIAL
3	1	7596	SEAL	40	1	7601	RATCHET
4	1	37476	CLUTCH HOUSING	41	21		STEEL BALL(IN 8409 KIT)
5	1	8322	SHIFTER ASSEMBLY	42	1		SPRING(IN 8409 KIT)
6	1	15879	MOTOR PINON GEAR	43	1	7600	INNER BRAKE DISC
7	4	8763	SCREW, 10-24X3/8"	44	1	7612	LIP SEAL
8	1	37478	UPPER HOUSING ASSEMBLY (Includes item 9 and gears)	45	1	7611	BUSHING
NOTE: DUE TO TECHNICAL ASSEMBLY REQUIREMENTS, THE UPPER HOUSING AND CLUSTER GEARS ARE NOT SOLD SEPERATLY.				46	1	7562	SPLINED CAM
				47	1	7732	PINION AND CAM (Includes item 49)
				48	1	7613	O-RING SEAL
				49	1		CAM
				50	1	37472	SPRING,DISC BELLEVILLE
				51	1	26749	WIRE ROPE ASSEMBLY
				52	1	5320	HOOK, 3/8" CLEVIS
				53	2	7616	SQUARE NUT
				57	1	5742	FAIRLEAD, ROLLER
				65	1	21710	REMOTE CONTROL
66	1	37527	SOLENOID PACK, 12V				
69	4	28396	SOLENOID PACK, 24V				
71	2	6005	SOLENOID, UPRIGHT TERMINAL				
75	1	15900	CLAMP				
76	1	15901	CABLE, ELECTRIC 2GA. 72" (RED)				
77	3	2090	CABLE, ELECTRIC 2GA. 72" (BLACK)				
79	1	34402	BOOT, ELECTRICAL TERMINAL				
22	1	8356	BEARING	79	1	16127	HEX HEAD CAPSCREW, M8 X 2.25 X 20mm
23	1	7552	RETAINING RING				HEX HEAD CAPSCREW, 5/16-24 X 1/2" (24V)
24	1	7548	INTERMEDIATE GEAR	P/N 37492 REV A0			
25	1	7550	MAIN GEAR				
		8680	SERVICE KIT,LOWER HOUSING (Includes items 26 thru 28, & 31)				
26	1		BUSHING (IN 8680 KIT)				
27	1		SEAL (IN 8680 KIT)				
28	1		THRUST WASHER (IN 8680 KIT)				
29	1	7708	DRUM				
30	1	2048	WIRE ROPE CLAMP				
31	1	7610	BUSHING (IN 8680 KIT)				
32	1	37490	END SUPPORT, ASSEMBLY (Includes items 31, 33 and 7)				
33	1	7582	END CAP				
34	1	7634	BRAKE ASSEMBLY, (Includes items 35 thru 50)				
35	1	35028	RETAINING RING				
36	2	7668	KEY				